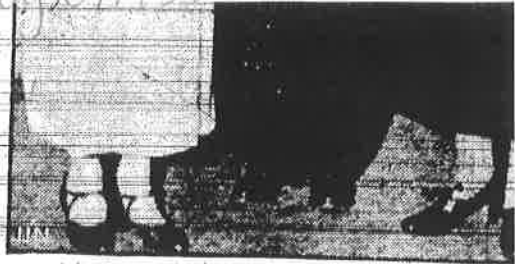


May 10, 1935



Here is Mrs. Franklin D. Roosevelt as she presented the cash prize in Washington, D. C., to Margaret S. Spencer of Tex., school teacher who won the essay contest on the topic, "Woman's World", sponsored over the radio by Mrs. Roos

avoid a storm which swept over Midway, may have alighted at one of the two barren little islands this side of their destination.

Dame Sentenced After His Surrender

Pocahontas, May 10. (A) Lige Dame, Jr., aged 17, who surrendered to officers after a short-lived flight from jail, today pleaded guilty in circuit court to a charge of burglary in connection with the burning of the \$40,000 Hotel Randolph here two weeks ago and was given a five-year sentence.

Judge John P. Bledsoe specified that the first year be spent in the boys' industrial school and the remainder in the state penitentiary.

Pocahontas, May 10. (A) Randolph county officers announced today the surrender of Lige Dame, Jr., aged 17, 24 hours after he escaped from jail, where he was held on accessory to arson charges.

The youth, held in connection with the \$40,000 burning of Hotel Randolph here two weeks ago, said he had been hiding in underbrush near Pocahontas since he crawled to freedom through a hole in the Randolph county jail wall.

Rain, cold and hunger forced him to end his flight, he said. He had left a note to Sheriff John Thompson when he escaped declared he was "going straight if you will let me."

505 CCC CAMPS ARE ALLOCATED

Three For Neighboring Counties to Faulkner

Washington, May 10. (A) Allocation of 505 CCC camps, about 100 in the southeast, for the national campaign against soil erosion by wind and rain, was announced today by Robert Fechner, CCC director.

Of the 505 camps, 55 were established under the old program, 150 formerly were operated by the forestry service and 300 are new camps created under the expanded CCC program.

Location of new soil erosion camps in the southeastern states include in Arkansas, 16.

Boone, Izard, Randolph, Van Buren, Cleburne, Craighead, Pope, Cross, St. Francis, Pulaski, Hot Springs, Hempstead, Columbia, Drew, Carroll and Conway counties.

Ethiopian Troops Reported Mobilizing

Rome, May 10. (A) The authoritative newspaper Giornale d'Italia in an article reliably described as officially inspired said today Emperor Haile Selassie was rapidly mobilizing Ethiopian troops close to the frontier of Italy's African colonies.

Tens of thousands of men are under arms near the frontier, the newspaper says, and great quantities of war materials, much of it allegedly furnished by Germany, have been supplied them.

The newspaper said the emperor had just visited the Harhar zone, one of the alleged concentration points and strategically important because it commands caravan and rail routes into Abyssinia, on an inspection tour.

Negroes Want Support For Elemental Rights

Atlanta, May 10. (A) In a statement opposing prohibition repeal, the Atlanta Baptist ministers' union, composed of negroes, said today: "If our white ministers are really interested in our voting let them courageously join us to fight for our elemental rights as well as become excited over liquor."

MARKETS

(Courtesy Fennell & Beane, 200 West Capitol Avenue, Little Rock)

| | Close | Change |
|------------------------------------|---------|---------|
| Allied Chemical | 148 | + 3/4 |
| American Can | 122 | + 1 1/4 |
| American Radiator | 14 | 0 |
| American T. T. | 119 1/2 | + 1/4 |
| American Tobacco | 86 | - 3/8 |
| Anaconda Copper | 15 1/4 | + 1/4 |
| Atholson | 40 1/2 | - 1/2 |
| Bethlehem Steel | 26 1/2 | 0 |
| Case Threshing | 58 1/2 | + 1/4 |
| Chrysler | 44 1/4 | + 1/4 |
| Corn Products Refining | 74 1/2 | + 3/4 |
| Dupont | 98 1/2 | 0 |
| Eastman Kodak | 138 1/2 | - 1/4 |
| Electric P. L. | 2 1/2 | 0 |
| Fox Film | 12 1/4 | + 1/4 |
| General Electric | 24 1/2 | - 1/4 |
| General Motors | 31 1/2 | + 1/4 |
| Goodyear Tires-Rubber | 19 1/4 | + 1/4 |
| Great Western Sugar | 30 | + 1/4 |
| International Shoe | 46 1/2 | 0 |
| Kelvinator Corporation | 15 1/4 | + 1/4 |
| Kroger | 24 1/2 | 0 |
| McKesson - Robbins | 6 1/4 | + 1/4 |
| Mo. Pac. preferred | 1 1/4 | + 1/4 |
| Montgomery Ward | 26 1/2 | - 1/4 |
| National Biscuit | 26 1/2 | + 1/4 |
| National Distillers | 24 | - 1/4 |
| N. Y. Central | 16 1/2 | 0 |
| Penney J. C. | 67 1/2 | + 3/4 |
| Procter - Gamble | 49 1/2 | - 1/4 |
| Radio | 5 1/4 | 0 |
| Reynolds Tobacco | 49 1/2 | + 1/4 |
| Sears Roebuck | 38 1/2 | - 1/4 |
| Standard Brands | 14 1/4 | 0 |
| Standard of N. J. | 45 1/2 | - 1/4 |
| Texas Corporation | 23 | + 1/2 |
| Texas Gulf Sulphur | 39 1/2 | + 1 1/4 |
| United Aircraft | 18 1/2 | + 1/4 |
| Union Pacific | 90 1/2 | + 1/2 |
| U. S. Rubber | 12 1/2 | + 1/4 |
| U. S. Steel | 32 1/2 | - 1/4 |
| Western Union | 27 | + 1/2 |
| Westinghouse | 46 1/2 | - 1/4 |
| Woolworth | 69 1/2 | 0 |
| Ark. Natural Gas | 1 | + 1/16 |
| Cities Service | 1 1/2 | 0 |
| Electric Bond-Share | 7 | + 1/4 |
| HOLC Bonds 101 31 3/2 to 102 2 3/2 | | |
| Sales, 1,580,000 shares. | | |

NEW YORK COTTON

| | Open | High | Low | Close | Prev. Close |
|------|-------|-------|-------|-------|-------------|
| May | 11.84 | 11.97 | 11.83 | 11.96 | 11.93 |
| July | 11.96 | 11.99 | 11.87 | 11.98 | 11.98 |
| Oct. | 11.73 | 11.83 | 11.67 | 11.82 | 11.75 |
| Dec. | 11.79 | 11.92 | 11.74 | 11.91 | 11.81 |
| Jan. | 11.84 | 11.94 | 11.78 | 11.94 | 11.86 |
| Mar. | 11.90 | 11.98 | 11.85 | 11.97 | 11.94 |

NEW ORLEANS COTTON

| | Open | High | Low | Close | Prev. Close |
|------|-------|-------|-------|-------|-------------|
| May | 11.89 | 11.89 | 11.89 | 11.85 | 11.90 |
| July | 11.90 | 11.92 | 11.81 | 11.90 | 11.93 |
| Oct. | 11.69 | 11.77 | 11.61 | 11.75 | 11.69 |
| Dec. | 11.74 | 11.84 | 11.70 | 11.84 | 11.75 |
| Jan. | 11.78 | 11.87 | 11.78 | 11.87 | 11.79 |
| Mar. | 11.87 | 11.93 | 11.84 | 11.91 | 11.97 |

CHICAGO WHEAT

| | Open | High | Low | Close | Prev. Close |
|-------|--------|--------|--------|--------|-------------|
| July | 96 1/4 | 96 1/4 | 94 1/4 | 94 1/4 | 96 |
| Sept. | 96 1/4 | 96 1/4 | 95 1/4 | 95 1/4 | 96 1/2 |

CHICAGO CORN

| | Open | High | Low | Close | Prev. Close |
|-------|--------|--------|--------|--------|-------------|
| July | 82 1/4 | 82 1/4 | 81 1/4 | 81 1/4 | 82 1/4 |
| Sept. | 77 | 77 1/4 | 75 1/4 | 75 1/4 | 77 |

July oats closed at 37 1/2; down 1/4.
Sept. oats closed at 35 1/2; down 1/4.

All Residents of Alaskan Town Ill

Seattle, Wash., May 10. (A) All white residents of Wainwright, Alaska, were reported ill with influenza today with no one able to care for the sick.

JOINS LOUISIANA TEAM.

Carl New, big right handed pitcher, has joined the Swartz, La., club of the Ouachita Valley league. New had a trial with Springfield in the Western association this spring.

200 MOTHERS EXPECTED HERE

Celebration to Be Held At Hendrix

Approximately 200 mothers of Hendrix students are expected to attend the fifth annual May and mother's day celebration at the college tomorrow and Sunday. Special invitations to all mothers of Hendrix students were mailed from the office of the dean of women last week, it was said. The program will open at 2:30 o'clock with arts and crafts exhibits in the Y. W. C. A. room of the Hendrix administration building and a music exhibit in the studios of the science building. The coronation of the queen by Dr. C. J. Greene is scheduled for 5:30 o'clock, after which a May festival in honor of the queen will be held.

Dances in which more than 100 members of the women's physical education department will take part will be given. The program for this event is under the direction of Miss Miriam Callender.

Members of the professional will be Dr. C. J. Greene, bishop, Jerome Neal, crown bearer; Carolyn Ligon, George Hill, Jane Harlan, David Newbern, Betty Harton, Sammy Gooden, Mary Jane Harlan and Wayne Martin, Jr., children of the court; the queen, Miss Mildred Boyce; her maids with escorts and the marshalls.

Chairmen of the committees for the celebration are: Mary Lee Eckels, Parkdale, ushers; Lucy Kate Reynolds, Ozark, publicity; Doris Rhodes, Stuttgart, art exhibit; Sarah Lee Moore, Prescott, crafts exhibit; Nan Estelle McHenry, music exhibit; Virginia Grinstead, Conway, registration; Mary Elizabeth Massey, Morrilton, decorations; and Cutting Favour, Hot Springs, marshalls.

Liquor Drinkers and Gamblers Banned By Blytheville Church

Blytheville, May 10. (A) Blytheville's largest church has banned members who drink, gamble or in any way participate in the liquor traffic under Arkansas' recently enacted legalization law.

Rev. Alfred Carpenter of the First Baptist church announced the unanimous adoption of a resolution to that effect at a congregational meeting attended by more than 100 members. The church has a membership of 1,100.

Even those who drink beer or liquor in the privacy of their homes come under the ban, along with those who rent property to liquor or beer dealers or who are engaged in the sale of intoxicants.

HELD FOR LARCENY.

Vernon Pearson was placed in the county jail by Cypress township officers last night. The man was accused in reference to a recent larceny.

Conway Man L Insurance S

This month's edition of Insurance Salesman carries a photograph of J. E. Etherly, who led all salesmen for the Illinois Bankers Insurance Company in personal and all-around excellence. Etherly's annual work in 1934, Mr. Etherly says, wrote \$206,000 on 204 lives during the year.

SENATE TO UP TVA

Filibuster on N. Bill Broker

Washington, May 10. A filibuster conducted by Senator Martin, Republican of Vermont, the Norris bill to strengthen the Tennessee valley authority act today when the senate consider the legislation.

The motion to take up the bill made by Senator Norris, Democrat of Nebraska, and was quickly defeated without a record vote.

The same motion had been before the senate for two days before a rule permitting debate occupied the floor most of the day, preventing a vote on it.

Two Texas Killers Go to Deaths In

Huntsville, Tex., May 10. Raymond Hamilton, burglar and murderer, was electrocuted today for the murder of Major Crowson, a military guard. He went to the elect at 12:19 a. m.

He followed his partner Joe Palmer, by only a few minutes, was placed in the chair at 12:04 a. m. and pronounced dead at 12:08 a. m.

His face pale, his hands trembled, Hamilton, a fine Texas football player, made a covering figure on the gallows that all hope had faded of his execution.

The 22-year-old Responder, who had appeared "tough," had a hard time composure after leaving the governor and the courts had to interfere with his execution.

"Of course you can't win," interrogators who asked what he had to say about criminals. He mumbled at the belt loops of his pants. He could not stand still.

"But there's no use repeating old stuff," he stammered as he looked at his cell. "I don't do no good."

"Keep your chin up," his lawyer, Mrs. Camille Opoush, Houston, wrote him in disclosure of the court of appeals had turned his petition for a writ of habeas corpus.

"In the absence of any showing Hamilton's legal rights have been violated, I think the verdict is final," Gov. James Allred said in refusing to grant a writ.

ing in Har-
g-Baptist
g-the beau-
presence of
and Mrs.
is an at-
lovely in a
signed in
she wore
Both the
positions
Telephone
home-in
months,
pleted his

siting her
s, of Con-

pendicitis.
Mrs. Tom
veral days

and Leroy
ginta, of
ight with

new cab-
s-for din-
he rain.
called to
Saturday
and Miss

Mr. and
ill Satur-

nder of
day night